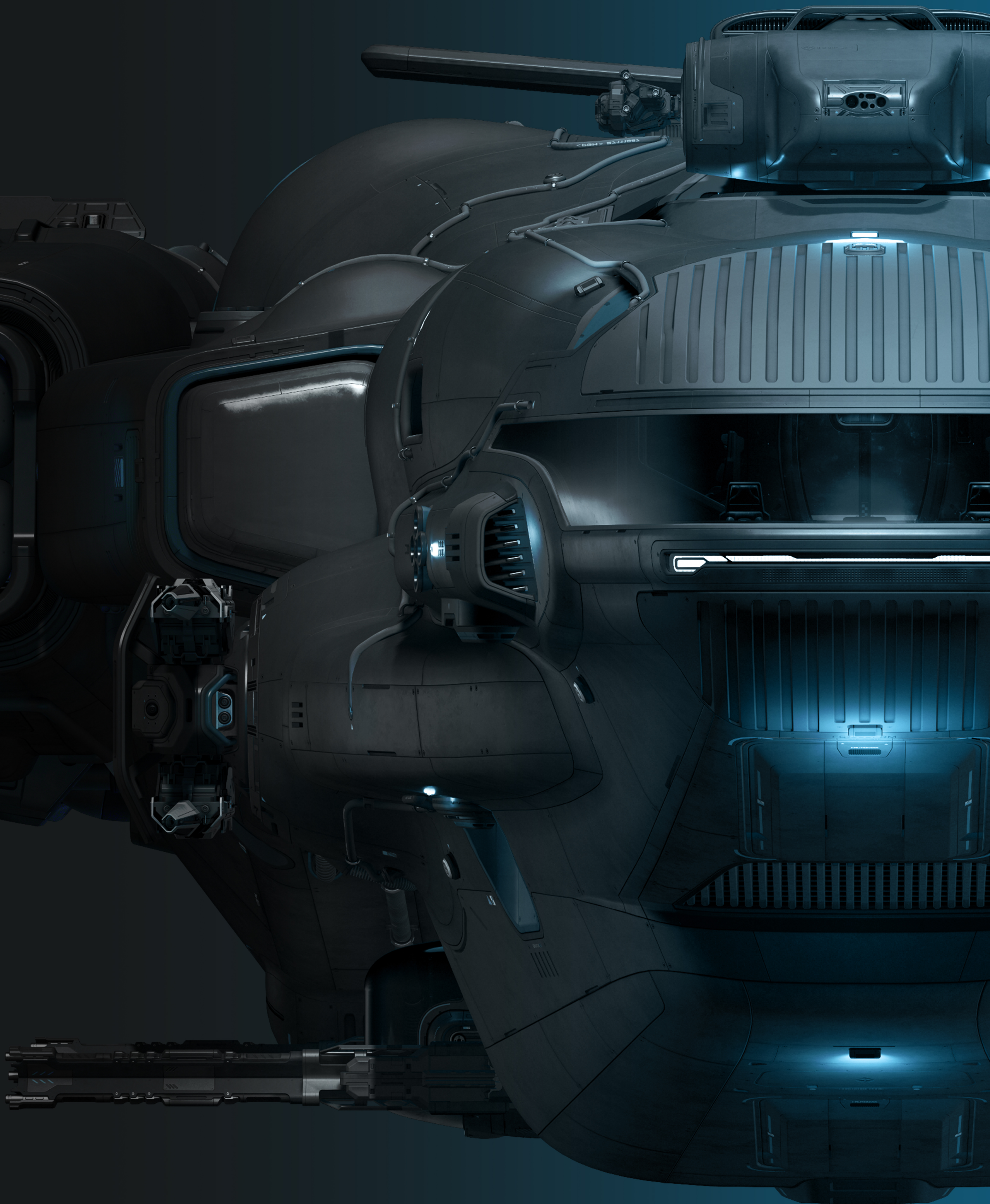




MISC/
STARLANCER TAC

SPECIFICATIONS

STARLANCER TAC

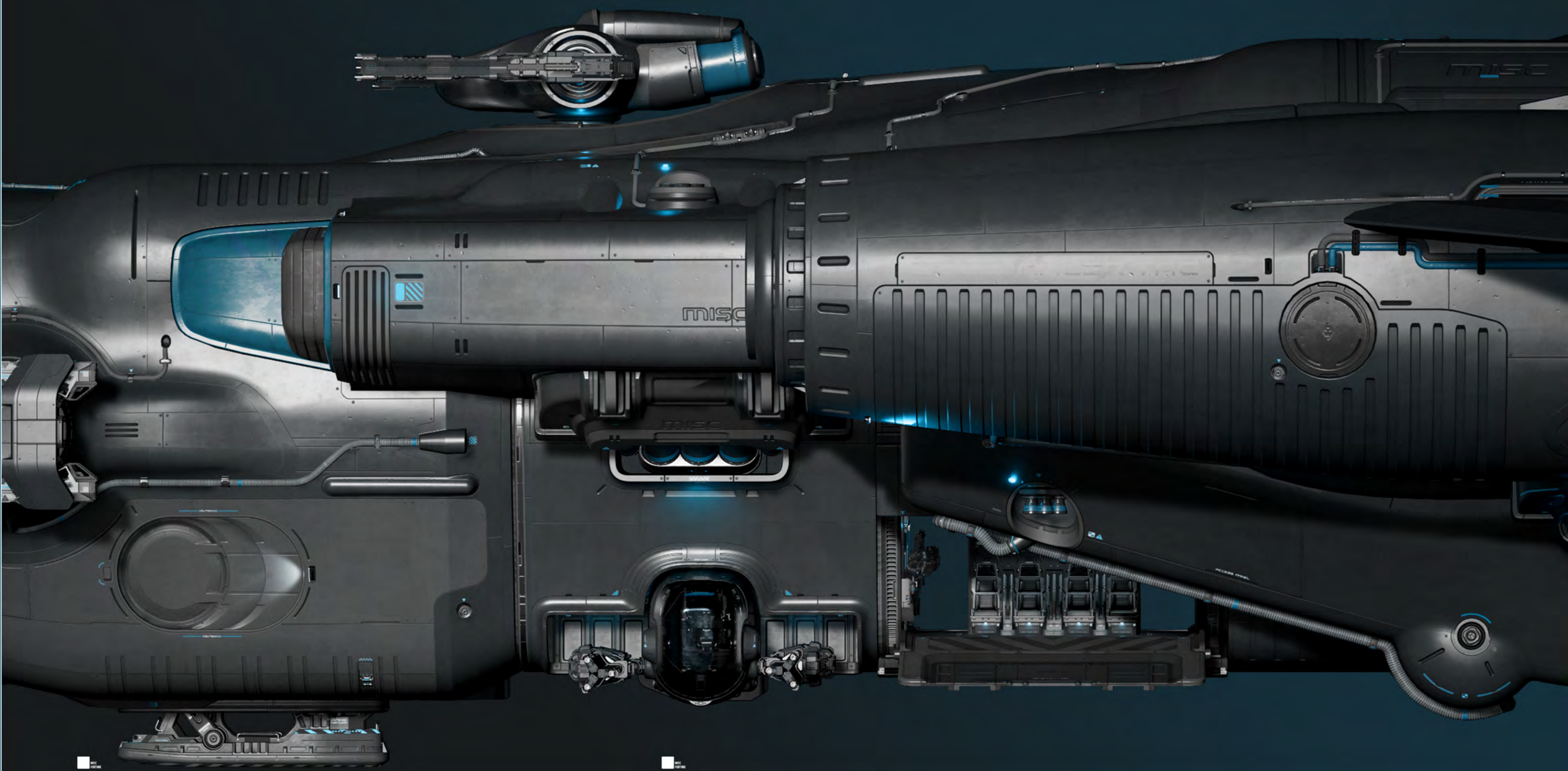


BUILT FOR LIFE



STARLANCER TAC

STARLANCER TAC



STARLANCER TAC



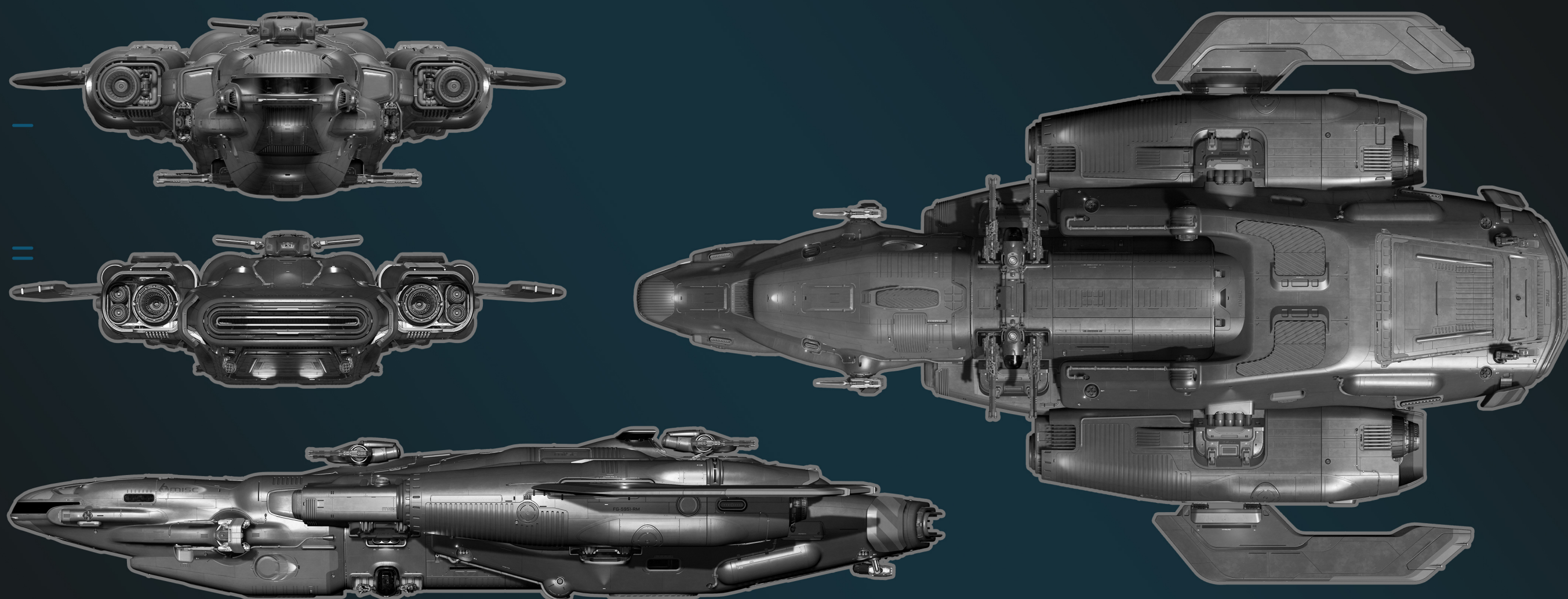
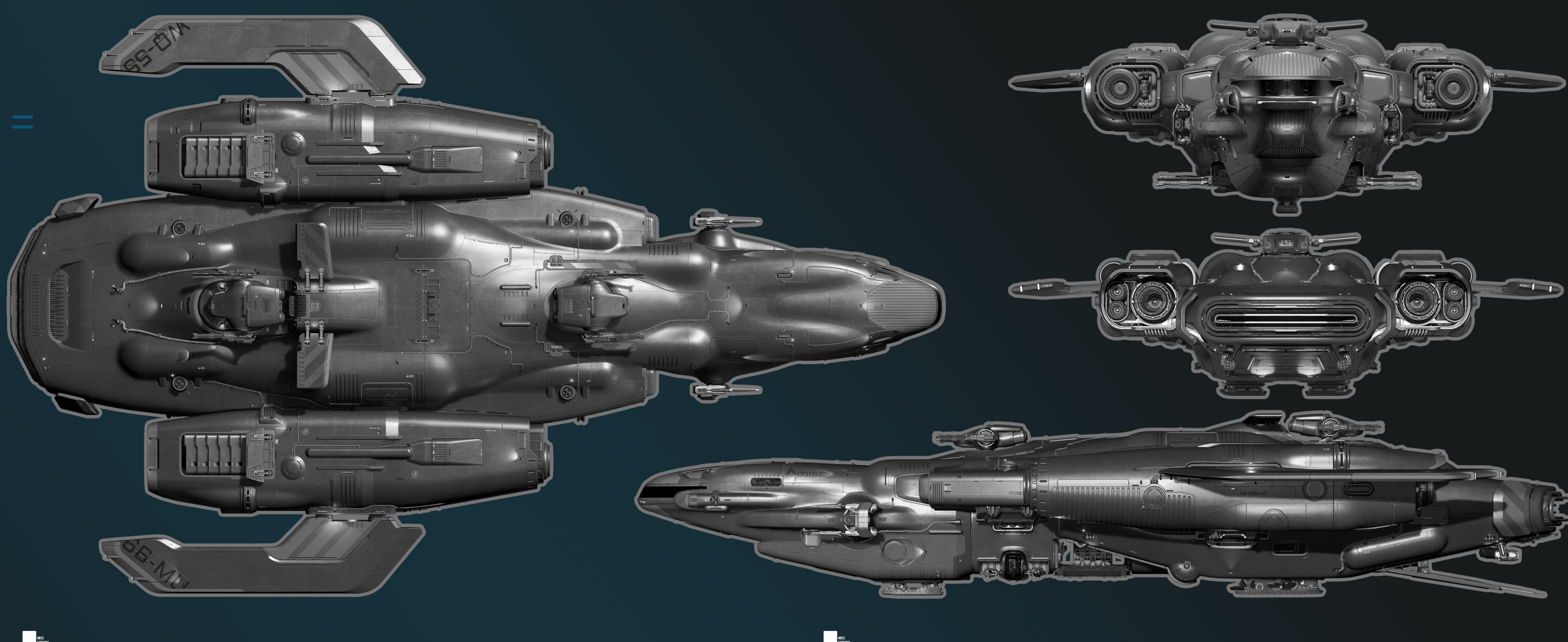


STARLANCER TAC



STARLANCER TAC

STARLANCER TAC



MISC/
STARLANCER TAC

SPECIFICATIONS

GENERAL	
LENGTH:	83M
WIDTH:	52M
HEIGHT:	16M
CARGO/SCU:	96 SCU
MAX CREW:	8
SCM SPEED:	115M/S
STATIONS (INCLUDING SEATS):	1X PILOT SEAT
	1X COPILOT/REMOTE MISSILE SEAT
	1X ENGINEERING CONSOLE
	2X REMOTE TURRETS
	2X MANNED TURRETS
	2X MOUNTED DOOR GUNS
	8X JUMP SEATS

AVIONICS	
COMPUTERS:	1X S2
RADAR:	1X S2
RELAY:	3X DUAL SLOT

SYSTEMS	
SHIELD GENERATORS:	2X S3
COOLERS:	1X S3
GRAVITY GENERATOR:	1X S2
LIFE SUPPORT:	1X S2
BATTERIES:	2X S2

HULL	
FUEL INTAKES:	2X
FUEL TANKS:	1X
QUANTUM FUEL TANKS:	1X

PROPULSION	
POWER PLANTS:	1X S3
QUANTUM DRIVE:	1X S2
JUMP DRIVE:	1X S2
THRUSTERS:	7X MAIN, 2X RETRO
MAV THRUSTERS:	16X MAV, 2X VTOL

WEAPONS
PILOT CONTROLLED WEAPONS:
2X DUAL GIMBALS WITH 2X S4
TURRETS:
2X REMOTE TURRETS: 2X S4
2X MANNED TURRET: 2X S5
2X MOUNTED DOOR GUNS WITH 1X S1
MISSILES:
2X REMOTE MISSILE TURRETS WITH 6X S2

