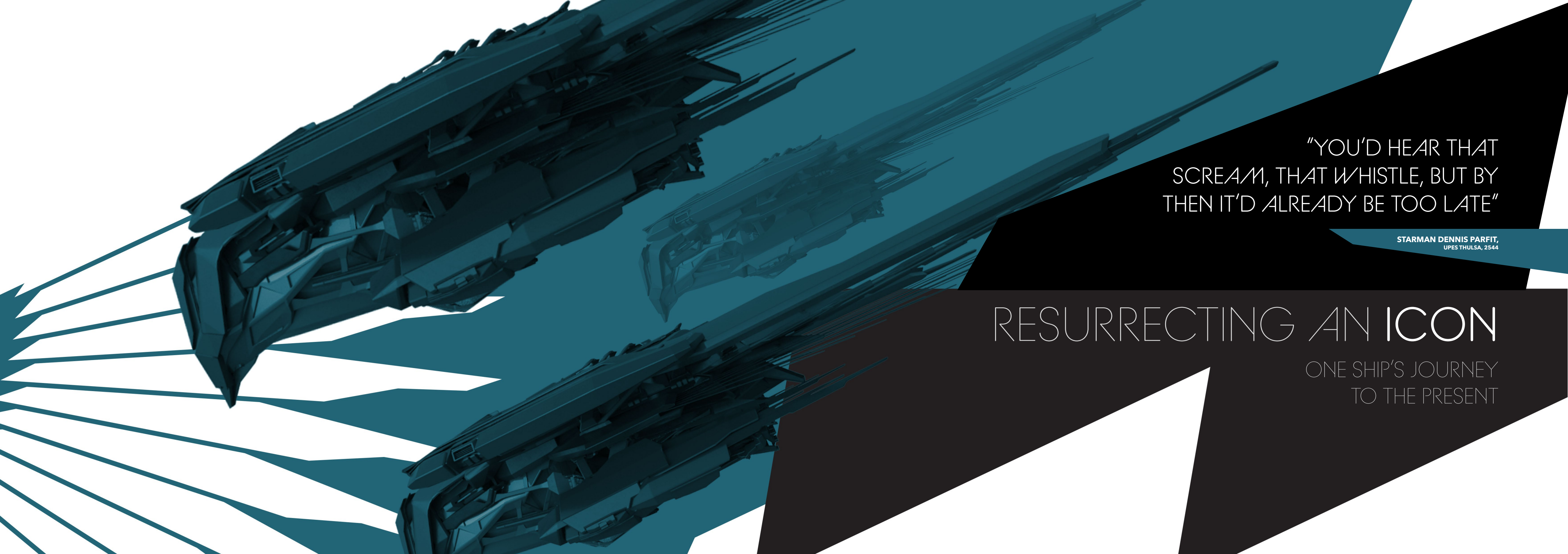




ESPERIA TALON



"YOU'D HEAR THAT
SCREAM, THAT WHISTLE, BUT BY
THEN IT'D ALREADY BE TOO LATE"

STARMAN DENNIS PARFIT,
UPES THULSA, 2544

RESURRECTING AN ICON

ONE SHIP'S JOURNEY
TO THE PRESENT



"THEY'D BE ON TOP OF YOU AND UNLEASH HELL BEFORE YOU COULD SCRAMBLE THE FIGHTERS. THEN THEY'D BE LONG GONE; DISAPPEARED WITHOUT A TRACE. AND YOU'D JUST BE A SITTING DUCK WITH YOUR COMMS FRIED, WAITING TO HEAR THAT WHISTLE AGAIN..."

LIEUTENANT WEBBER FORBES,
12TH FIGHTER SQUADRON UPES HORIZON, 2544

WEAPON OF WAR

The history books are filled with dozens of accounts from the Tevarin wars of seemingly spectral forces that could be lurking anywhere, waiting to strike when least expected. The uniquely effective attack methods and formations employed by Talon pilots exemplified

the Tevarin use of coordinated strikes. These near-synchronous attacks maximized each aggressor's strength as part of a greater combined assault. Tevarin Strike teams were models of ruthlessly efficient, surgically precise mayhem. The Talon was chief among their deadly tools.

LASTING/LOST LEGACY

Centuries have passed since Talons harried UPE forces, but the innovation on display in those very ships helped bring the spaceflight industry to where it is today. By the start of the First Tevarin War, Human spaceships relied almost entirely on physical armor to withstand attacks. Tevarin ships, however, featured technology that created shield projections much more efficiently.

And that didn't exclusively apply to combat-focused applications - the Tevarin also utilized airshield technology that redefined how Humans approached capital ships and space stations.

Despite these profound impacts on the industry, most Tevarin ships and the specifics of their engineering were lost to history thanks to the sweeping destruction of the Purge.





OPPORTUNITY OF DISCOVERY

The discovery of Tevarin weapon caches in the Kabal system allowed Esperia a unique opportunity to study authentic, functional technology up close that had laid untouched for

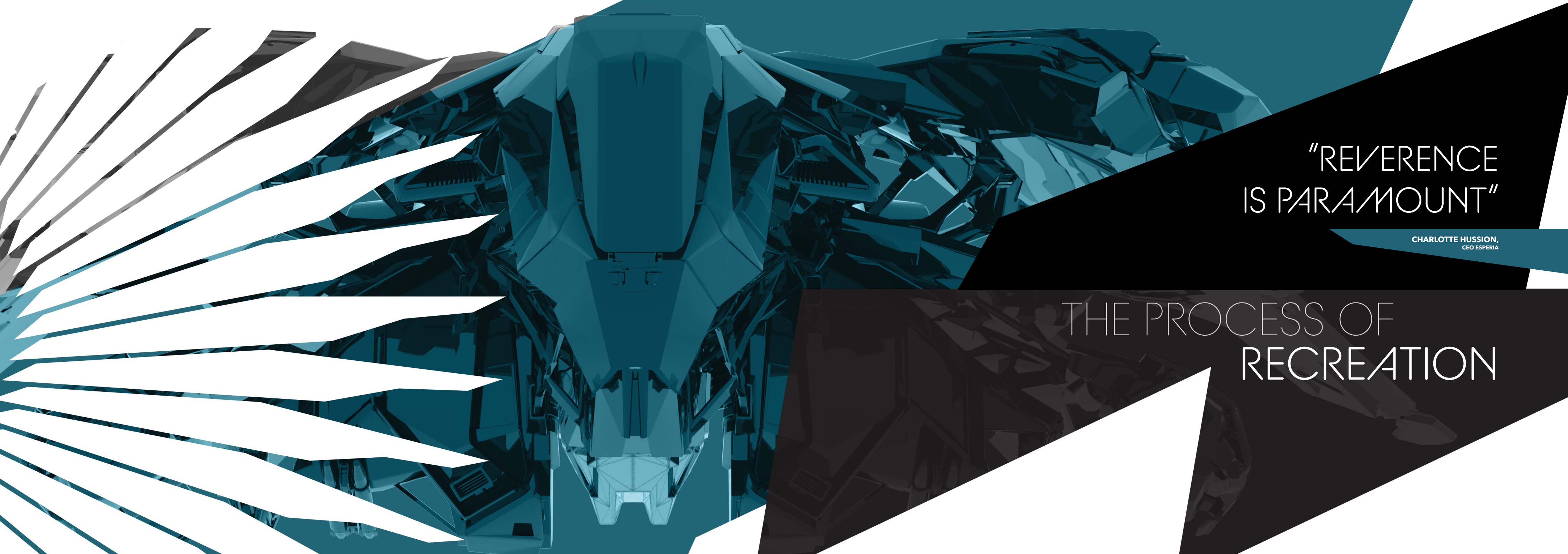
centuries. Thanks to the UEE, Esperia engineers enlisted Tevarin historians to transport and study these artifacts, creating the most comprehensive assessment of Tevarin technology to date.

AN ICON REMASTERED

The Talon, like the Prowler personnel carrier before it, represents Esperia's continuing effort to preserve historically significant Tevarin ship designs, as well as update them for practical

Human use. Offered with an unparalleled level of Authenticity, Esperia is beyond elated to take this journey through history with all of Humanity.





"REVERENCE
IS PARAMOUNT"

CHARLOTTE HUSSION,
CEO ESPERIA

THE PROCESS OF
RECREATION



"THE DISCOVERY OF KABAL REMAINS COMPLICATED FOR US. WHEN ESPERIA APPROACHED ME TO CONSULT ON THIS, I WASN'T IMMEDIATELY SURE HOW TO RESPOND, BUT SEEING THEIR DEDICATION TO PRESERVING OUR TECHNOLOGY AND HISTORY IS INSPIRING."

SENATOR SUJ KASSI

RESPECTING THE ORIGINAL

Utilizing the close consultation of both Human and Tevarin pilots and historians, the recreation process is exhaustive in incorporating modern safety requirements while keeping as close as possible to the original period designs. Steps included extensive R&D to recreate the original Talon's outer hull and high stealth capabilities.

Faithful to the last detail, the Talon even features bespoke weapons, crafted to be as close to the Tevarin originals as modern technical and legal limitations allow.

FUNCTIONAL HISTORICAL VARIANT

Among the ships discovered was an immaculately preserved variant model of the Talon, developed during the Second Tevarin War with a missile-focused offensive configuration.

These infamous Shrike, as they came to be designated, are well documented in historical accounts, known for unleashing deadly barrages of missiles that added devastating lethality to the hit-and-run attacks typical of the Tevarin offensive strategy.





ADAPTED FOR HUMAN COMFORT

The Talon's cockpit is one of the few areas significantly modified for Human use. However, the pilot seat and unique single-stick control scheme remain as faithful as possible to the original period designs thanks to the consultation of Tevarin pilots well-acquainted with fighter ships.

Its distinct escape pod functionality, often integral in the unusual and highly effective combat techniques traditionally employed by Talon pilots, remains remains faithfully and functionally intact (or detached, if the case calls for it).

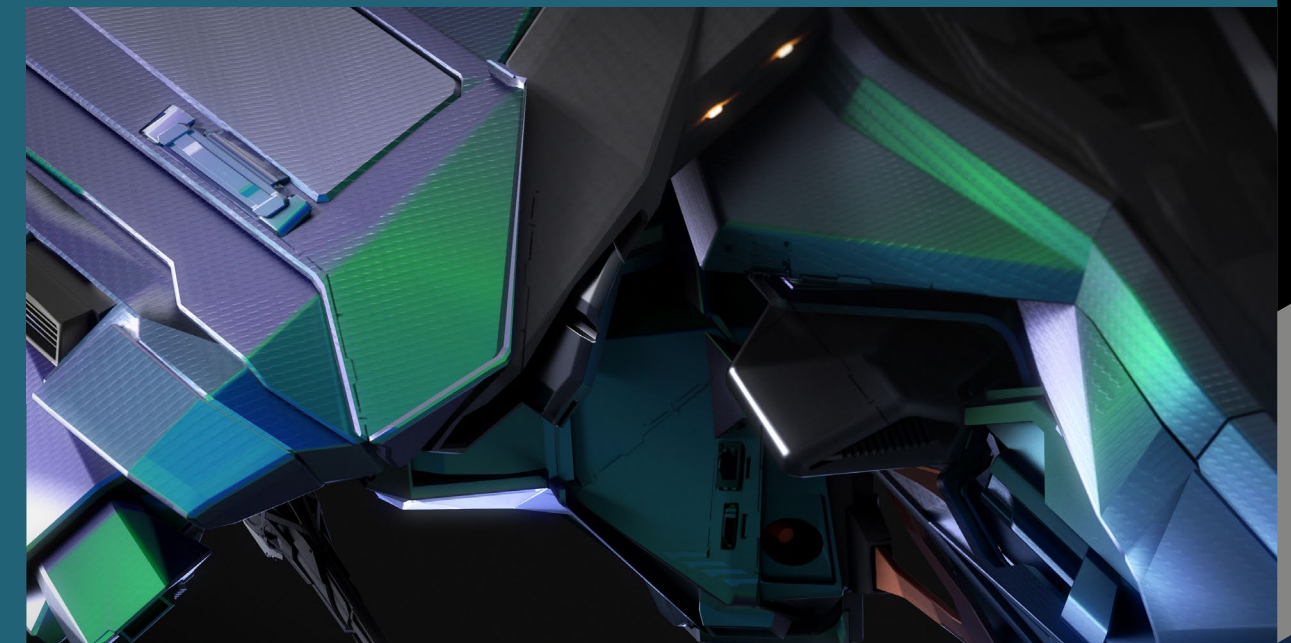
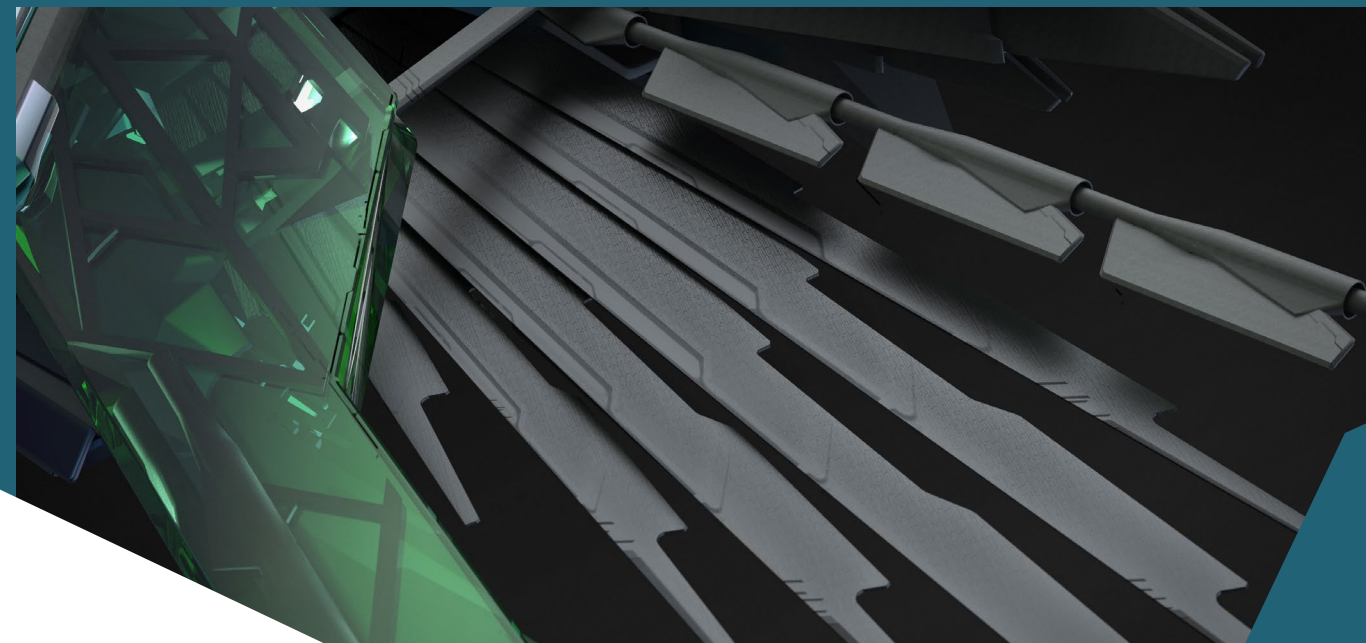
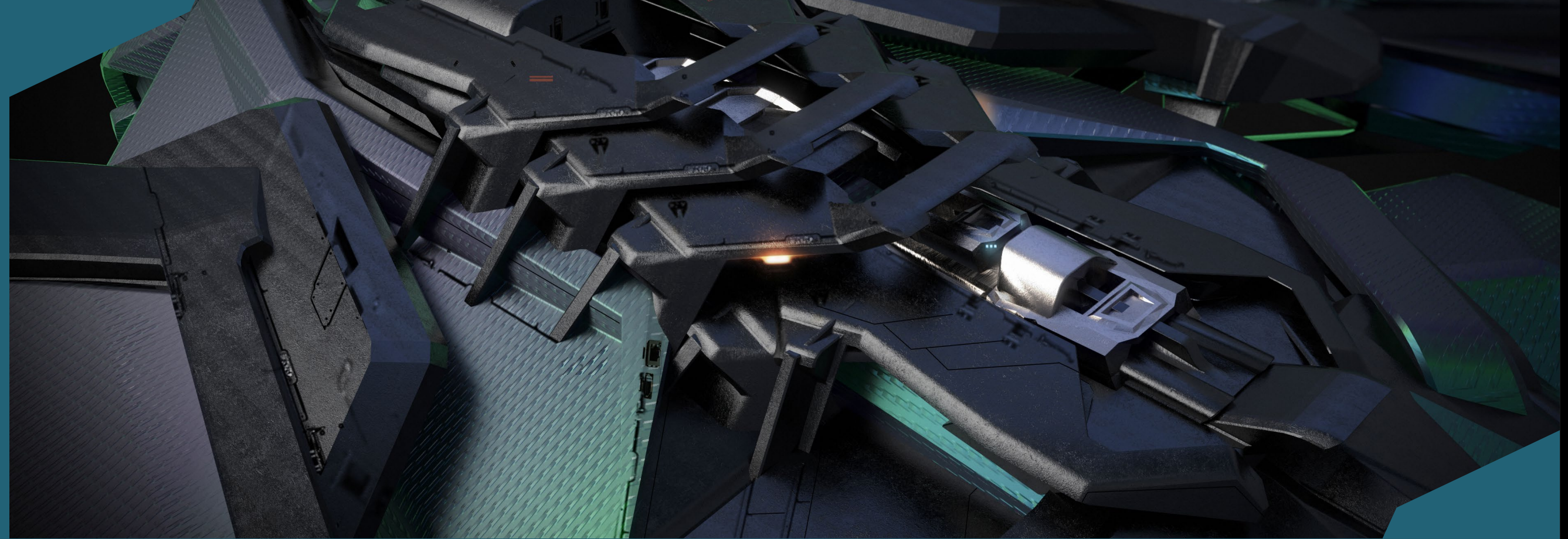
BUILT TO FLY

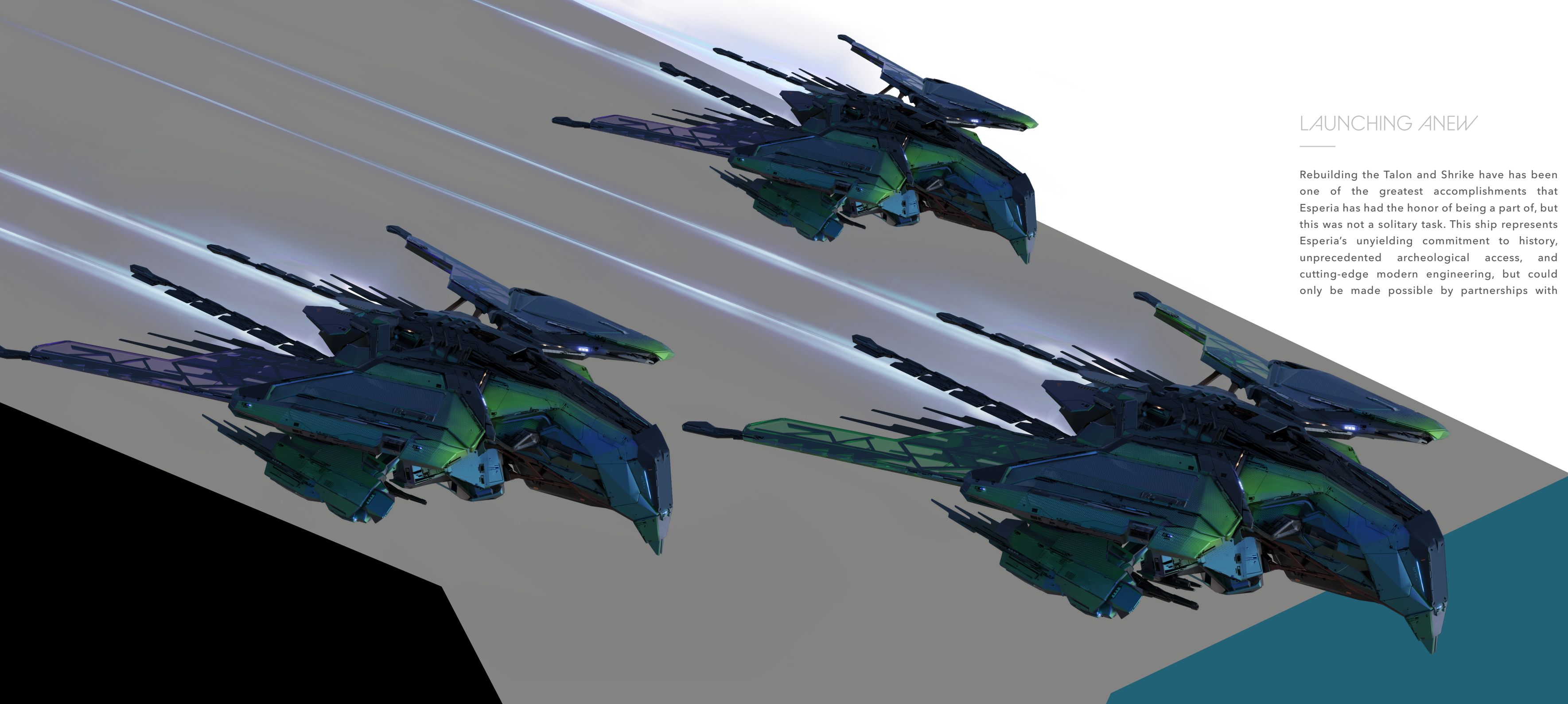
Even while preserving the historical and technological sanctity of the original designs, the Talon was intended to be a fully functional, combat-ready ship equipped with safety features that fully comply with current TSB standards.

Updated airshield tech, built to the traditional Tevarin implementation, means there's no need to stress about aging airlocks, while unique

countermeasures derived from original specs found on Kabal III create radar decoy signals, to leave aggressors fighting ghosts.

The alloy that makes up much of the Talon's hull is a fully synthetic material, reverse-engineered in-house to replicate the uncommon stealth qualities of the mysterious metal on which it is based.





LAUNCHING ANEW

Rebuilding the Talon and Shrike have has been one of the greatest accomplishments that Esperia has had the honor of being a part of, but this was not a solitary task. This ship represents Esperia's unyielding commitment to history, unprecedented archeological access, and cutting-edge modern engineering, but could only be made possible by partnerships with

the UEE Government, the ICC, and the Tevarin people. The dedicated work of hundreds of engineers, fabricators, historians, soldiers, and pilots from all races cannot be underestimated either. Esperia is proud to present this near-perfect recreation of the infamous Talon - a piece of the past that you can fly today.

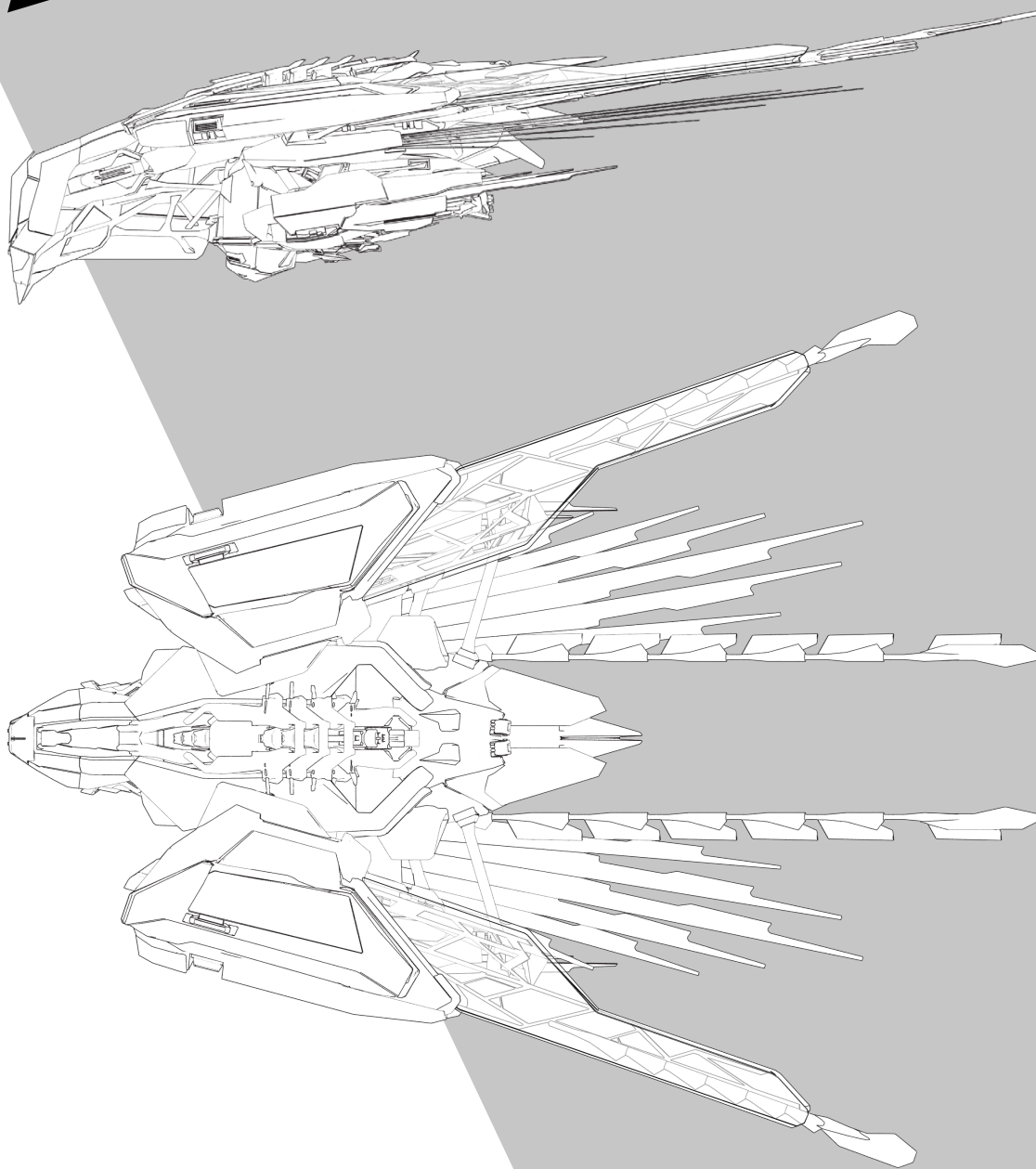
TALON

LENGTH	20m
WIDTH	18m
HEIGHT	5m
MAX CREW	1 (Pilot)
MAX SPEED	250m/s
MASS	28,000kg
EJECTOR SEAT	1x
LIFE SUPPORT	1x Small
ARMOR	1x Light
SHIELD GENERATOR	2x Small Tevarin Shield
JUMP DRIVE	1x Small
QUANTUM DRIVE	1x Small
THRUSTERS	12x Mav Thrusters
	2x Retro Thrusters
MAIN THRUSTERS	4x Main Thrusters
BATTERY	2x Small
WEAPONS	2x S3 Tevarin Ballistic Cannon (Gimballed)
MISSILES	2x S3 racks
	(2x S2 Tevarin Missiles per rack)

TALON *SHRIKE*

LENGTH	20m
WIDTH	18m
HEIGHT	5m
MAX CREW	1 (Pilot)
MAX SPEED	250m/s
MASS	28,000kg
EJECTOR SEAT	1x
LIFE SUPPORT	1x Small
ARMOR	1x Light
SHIELD GENERATOR	2x Small Tevarin Shields
JUMP DRIVE	1x Small
QUANTUM DRIVE	1x Small
THRUSTERS	12x Mav Thrusters
	2x Retro Thrusters
MAIN THRUSTERS	4x Main Thrusters
BATTERY	2x Small
WEAPONS	2x S1 Tevarin Ballistic Cannon (Gimballed)
MISSILES	2x Bespoke internal racks
	(12x S3 Missiles per rack)

IN-FLIGHT



LANDED





WWW.ROBERTSSPACEINDUSTRIES.COM/TALON

The models featured in this publication are approved for use in the UEE. Specifications correct as of date of publish. Specifications, features and appearance are subject to revision during development.

© 2020 Cloud Imperium Rights LLC and Cloud Imperium Rights Limited.
Star Citizen® and Roberts Space Industries® are registered trademarks of Cloud Imperium Games Rights LLC